



Buyer's Guide

For Education





Mission Statement

At Clear Touch, we are passionate about providing a complete solution for interactive displays and technology solutions that enhance engagement, experience, and collaboration in education, government, and business settings. Our mission is to deliver innovative products that are easy to use, versatile, durable, and cost-effective while offering exceptional customer service and support. We believe that interactive technology can transform the way people learn, work, and communicate, and we strive to create solutions that empower our customers to be brilliant wherever they are.

Introduction

Discover the Cutting-Edge Technology of Clear Touch

Clear Touch® is a company that started from humble beginnings that has grown from garage to greatness to become a leader in technology for education and business. With over 10 years of history, Clear Touch is a privately held, US-based company with headquarters in Greenville, SC. Clear Touch is constantly shaking up the market with its innovative products that are changing the way we live and work. Clear Touch has a professional development team consisting of former administrators, board members, teachers, and educators who understand the needs and challenges of their customers. Our team is here to ensure that Clear Touch users get the best possible experience out of their products. Clear Touch has a strong presence in the market with exciting features such as multi-touch technology, accessories, versatile stands, and collaboration software. Clear Touch's customers choose us for quality products and ease of use for integrating solutions.

U.S. Owned and Operated

We're proudly 100% American owned and operated. Our products and services reflect our unwavering commitment to quality and reliability.

Ongoing Partnership

Learning new tech can be tough. We're here to support you with resources, workshops, and expert-led learning to make the most of your investment.

Award-Winning

Not to brag, but we've earned awards from Inc. 5000, Tech & Learning, Entrepreneur Magazine, and more. Get ready for award-winning solutions and services. Impressed yet?

Clear Touch Experience App

Stay informed, connected, and get access to the Clear Touch Academy for courses and guides. Be a part of our community with exclusive offers and giveaways. Join today!



6000A+

Interactive Panel Series



65"

75"

Part Numbers: CTI-6065A+UH20, CTI-6075A+UH20

A New Era of Learning Begins



Panel Overview:

Introducing the Clear Touch 6000A+: a cutting-edge interactive panel with an EDLA-certified onboard chipset. Elevating education enhances classroom interactions with exceptional audio and visuals, creating an immersive learning environment that sparks student curiosity. Setting new standards, the 6000A+ pioneers the fusion of Android 13 and EDLA, offering free form updates and features an internal PC add-on slot for effortless content delivery. Embark on an educational revolution with the Clear Touch 6000A+ interactive panel, where technology transforms classrooms into hubs of interactive learning.

Applications:

Classrooms • Meeting Rooms • Lecture Halls



What does “EDLA” mean?

EDLA, **Enterprise Device License Agreement**, is a program by Google that provides a set of advanced security features for Android devices. EDLA allows users to use native apps from Google, Microsoft, and approved apps in the Play Store. The A+ panel can be managed through the Google Admin Console. EDLA is built into the onboard chipset. Clear Touch has dedicated itself to panel upgradability so our users can avoid the cost and trouble of replacing older hardware.

All New

INNOVATION KNOWS NO BOUNDARIES

Immerse in effortless navigation, seamless responsive interactions, stunning high-resolution visuals, and captivating audio with the 6000A+ series. Perfect for all types of K-12 and Higher Education classrooms, the 6000A+ series elevates engagement and fosters the sense of collaboration within the educational world. The intuitive interface ensures easy navigation, making it user-friendly for educators, students, and IT professionals alike.

ELEVATE INTERACTIVITY WITH THE A+

Cutting-edge Audio: Top-mounted 2.2 soundbar speakers for immersive sound.

Enhanced Clarity: Six EDLA-compliant microphones auto-adjust for clear interactions.

Versatile Connectivity: Supports USB connection for expanded functionality.

3-in-1 Microphone System: Move freely around the classroom while maintaining clear communication.



[SPEC SHEET DOWNLOAD](#)



Features:

- EDLA GOOGLE APP AND PLAY STORE INTEGRATIONS**
- POWERFUL PROCESSOR**
- 2.2 SOUND CHANNEL**
- USB-C CABLE (AUDIO, VIDEO, TOUCH, AND POWER)**
- INCLUDED & UPGRADEABLE COLLABORATION SOFTWARE**
- INCLUDED WIFI MODULE**



7000XT

Interactive Panel Series

43"

65"

Part Numbers: CTI-7043XT-UH20, CTI-7065XT-UH20

[An Engaging and Interactive Learning Experience](#)



Panel Overview:

Invest in the future of education with Clear Touch's 7000XT interactive panel. Combining accurate and responsive projected capacitive touch (PCAP) technology for superior multi-touch control with an unparalleled audio and video experience, our XT Series is the ultimate tool for hands-on learning. Boasting ten points of writing and twenty points of touch, multiple students can seamlessly interact with the panel at once - allowing for an immersive and engaging learning experience that fosters collaboration, creativity, and communication. Whether for early childhood education or beyond, trust the 7000XT to elevate your classroom to the next level.

Applications:

Classrooms • Science Labs • Vocational Programs • Collaboration Space



19.7"
Adjustment
Range

Let us accommodate you!

The Mini Convertible Stand pairs well with the 43" XT, which is great for early learners. Using tabletop mode allows early learners to easily collaborate and operate the panel from a height-appropriate level. The 65" XT utilizes the Convertible Stand to enable height and angle adjustments for comfort during operation. This is ideal for learners to use during classroom collaboration, presentations, brainstorming, STEM labs, and more.

Versatile

UNLEASH YOUR COLLABORATION

Experience the future of collaboration with the 7000XT interactive panel series. This remarkable series sets new standards by delivering unparalleled precision and responsiveness, revolutionizing the way we collaborate. Pairing a captivating display and cutting-edge connectivity ushers in a fresh era of dynamic presentations and engaging educational experiences. The 7000XT series is your ultimate choice for fostering seamless connections and impactful engagements.

EXPERIENCE THE FUTURE OF ENGAGEMENT

Redefined Learning: This panel blends advanced features and a smooth performance for group activities, table mode, stations, and more.

Easy Interface: Effortlessly navigate content with its intuitive interface, streamlining interaction for all.

Stunning Clarity: Captivate learners with exceptional 4K or Ultra HD visuals that bring content to life.

Simple Interactions: Empowering all, with its brilliant features and responsive touch to enhance learning interactions.



[SPEC SHEET DOWNLOAD](#)



Features:



4K VIEWING EXPERIENCE



USE AS A TABLE WITH THE MINI OR FULL CONVERTIBLE STAND



INTUITIVE TOUCH EXPERIENCE



INCLUDED & UPGRADEABLE COLLABORATION SOFTWARE



INTEGRATED DEVICE CASTING



PANEL MANAGEMENT WITH VIDEO BROADCAST



INTEGRATED MESSAGING AND ALERT NOTIFICATIONS



8000MAX

Interactive Panel Series

86"

Part Number: CTI-8086MAX-UH10

Command the Attention of your Classroom



Panel Overview:

Elevate your presentations with Clear Touch's 8086MAX - the ultimate interactive display. We've fused traditional writing spaces with attachable blackboard wings, allowing educators to keep key points stationary and utilize several components of the interactive flat panel. Combining a 4K or Ultra HD resolution, bilateral infrared technology, and a built-in sound bar, this innovative display is your ultimate presentation solution. Perfect for educators who want to deliver engaging content and capture their audience's attention with interactive, multimedia-rich materials. Upgrade your presentations to the next level with the 8086MAX.

Applications:

Higher Education Lecture Hall • Classrooms • Meeting Spaces

Stand tall, along with your tech.

Elevate your Clear Touch 8086MAX experience with our sleek and sturdy adjustable stand, designed to complement the brilliance of the interactive display. Engineered for stability and flexibility, our stand ensures optimal viewing angles and effortless maneuverability, while our magnetic blackboard wings add versatility for spontaneous ideation. Our stand integrates with the 8086MAX, empowering you to interact, present, and collaborate with utmost comfort.



Big Impact

IMMERSIVE EDUCATION STARTS HERE

The magnetic blackboard wings of the 8086MAX seamlessly combines traditional teaching methods with modern technology. Educators can now effortlessly write, draw, and manipulate content, fostering a dynamic and immersive learning experience that resonates with all types of students. Elevate engagement and learning impact with the 8086MAX, exploring a world where advanced technology seamlessly complements education, creating immersive and lasting educational experiences.

WHERE TWO WORLDS MEET

Effortless Integration: Equips teachers to blend conventional teaching styles and cutting-edge technology.

Enhanced Teamwork: Encourages students to operate cooperatively either on the interactive panel or the magnetic blackboard wings.

Make Your Impact: Post crucial notes, reminders, and news on the wings without disturbing the panel's lessons.

Offline Interactions: Utilize the blackboard wings to conduct full lessons, even writing over the turned off screen with liquid chalk.



[SPEC SHEET DOWNLOAD](#)



Features:

- 4K** 4K VIEWING EXPERIENCE
- ENHANCED 2.1 AUDIO SYSTEM**
- PANEL MANAGEMENT WITH VIDEO INTEGRATED MESSAGING, AND ALERT NOTIFICATIONS**
- BILATERAL INFRARED TECHNOLOGY**
- INTEGRATED DEVICE CASTING**
- MAGNETIC BLACKBOARD WING EXTENSIONS**



NEXT Hub

Display Update Device



Part Number: CTI-NEXT-TDED-S10
Transform Your Older Displays



Overview:

The NEXT Hub is an all-new display update device with a built-in Android OS and EDLA user interface. It offers a cost-effective and eco-friendly solution for updating older existing interactive or non-interactive displays. By removing the need to replace functional hardware and extending the lifespan of existing displays, the NEXT helps reduce electronic waste and promotes a more sustainable approach to classroom technology. This sustainable solution allows schools to prioritize technological innovation while minimizing their environmental footprint. Updating displays is now a hassle-free experience – just plug and play to witness the impressive transformation.

Applications:

Classrooms • Lecture Halls • Science Labs • Meeting Spaces

Chorus

Whiteboard



Collage

Command

Integrated software suite that delivers.

Beyond the older display update, the NEXT Hub empowers educators with a fully integrated and comprehensive suite of software solutions designed to optimize classroom collaboration and engagement, fostering a more interactive and enriching learning experience. Access the latest educational apps, tools, and resources with the NEXT's intuitive Android 13 EDLA interface, which also provides extensive security features plus onboard integration with the Play Store.

Connect

STRATEGIC SUSTAINABILITY STARTS HERE

The NEXT Hub is a solution tailored for the education sector, suitable for teachers, administrators, and IT professionals looking to update their existing displays. This product aims to enhance performance and meet the demands of today's digital world and education technology standards. The NEXT provides opportunities for seamless teaching and captivating experiences for students. It eliminates the need to break the bank or dispose of current equipment, offering a comprehensive solution for educators.

UPDATED EXPERIENCE WITH THE NEXT HUB

Built-in Huddle Camera: Ready to go with 120° of 4K video supports remote or hybrid learning.

EDLA Features & Security: EDLA provides extensive security features plus integration with the Play Store.

Seamless Interactivity: Designed to Plug & Play, with a quick switch between Android and Device dual modes.

3-in-1 Microphone System: Move freely around the classroom while maintaining clear communication.



[SPEC SHEET DOWNLOAD](#)

Features:



120° WIDE ANGLE CAMERA



TWO 10W DUAL-CHANNEL SPEAKERS



AUTO-FRAMING/TRACKING TECHNOLOGY



ANDROID 13 OS, WITH EDLA



SIMPLE INSTALLATION



INTEGRATED SOFTWARE SUITE





NUITEQ®

NUITEQ®, a collaborative software company that enables smarter human interaction was recently acquired by Clear Touch. The two companies have been partners for nearly a decade, delivering innovative and engaging solutions for education and business sectors. By integrating Clear Touch’s interactive display technology with NUITEQ’s award-winning Chorus and integrated Whiteboard software, they have supplied thousands of interactive displays and software licenses for schools and enterprises worldwide. The partnership will allow them to offer more value and benefits to their customers and to create more advanced and user-friendly products that enhance collaboration and productivity.



Chorus AI Assistant

Brand New!

The Chorus AI Assistant is designed to do the heavy lifting of lesson planning. With just a few written prompts, you can create a lesson activity that saves time, increases engagement, and creates more opportunities for student-led discussions!



Chorus

Lesson Activities

[Lesson Plans at Your Fingertips](#)

Chorus by NUITEQ® creates engaging experiences for your students, available online or in-app. By weaving pre-built elements together with images, videos, and sound effects, you can create interactive learning experiences that capture your students’ attention and engage their minds.

Features include:

- Built-in, interactive lesson activities
- Split the screen in up to four different zones simultaneously
- Online community full of activities aligned to standards separated by region



Chorus Online

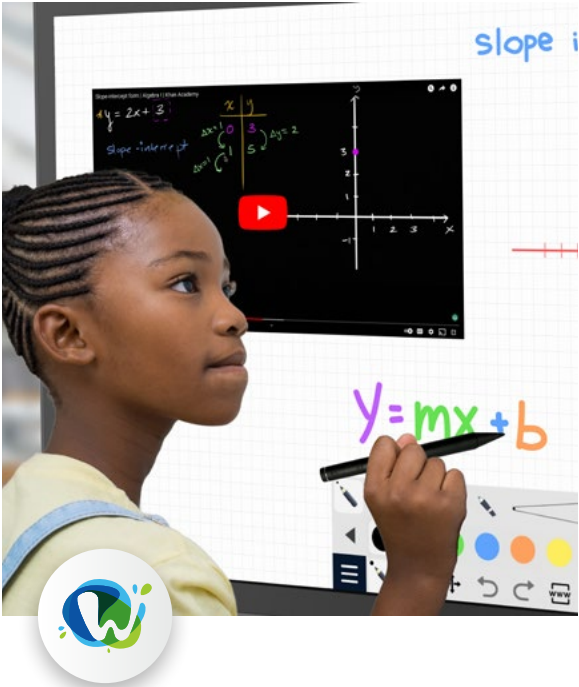
Web-based Content

[The Future of Education](#)

Chorus Online is a web-based educational software tool that allows teachers and students to access lesson activities from any device. It is the perfect solution for any kind of learning, as it provides a seamless way for teachers to deliver instruction and students to participate.

Features include:

- Interactive, standards-aligned activities
- Real-time collaboration
- Teachers can provide feedback and track student progress with graded activities
- Interactive audience polling features helps teachers gauge student understanding



Whiteboard

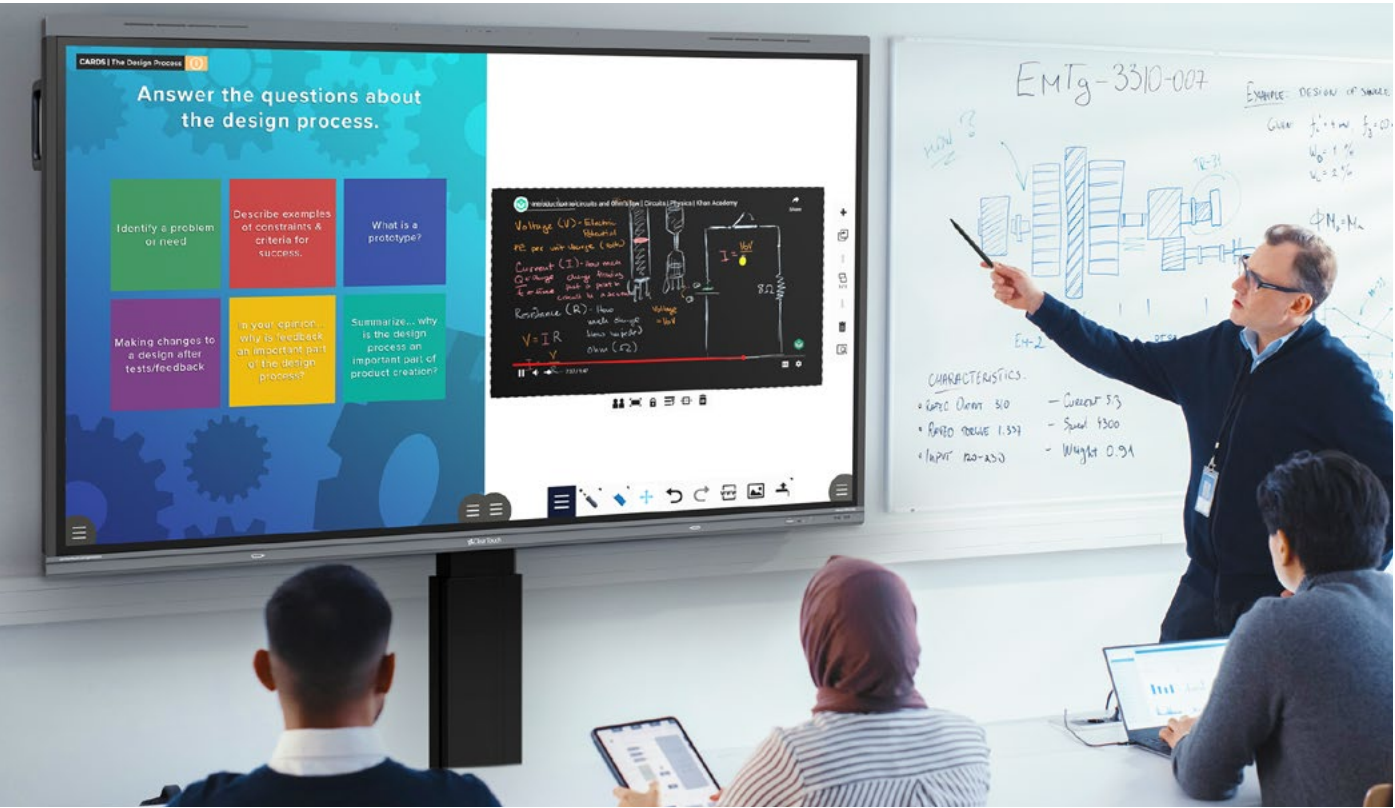
Whiteboarding

Gather Your Digital Resources into One Space

Integrated inside Chorus, is Whiteboard, which provides a remarkably simple solution: a single application that incorporates unlimited live web browsers, videos, lesson activities, and other presentation tools into a unified whole.

Features include:

- Access on-screen calculators, rulers, graphing tools and other STEM tools
- Unlimited space, unlimited canvas whiteboard
- Easy content sharing and Google Drive access
- Effortless YouTube video playback without ads
- PDF importation & exportation



Collage®

Screen Casting

Creating a Connected Classroom

Clear Touch Collage® software is an easy-to-use solution that encourages student involvement in activities, even when they have their own devices.

Features include:

- Ability to screen cast up to nine devices
- Manage connected devices with permissions
- Seamless synchronized audio, video, touch, and scaling
- VLAN setups and connection via WiFi, with session codes that change as often as you need
- Instructor permission controls give the user the ability to allow or restrict devices from connecting and sharing content



Device Agnostic with Touch

Compatible with macOS and PCs for touchback during screenshare.





Command® Device Management

You Have the Power
Time to take control. Command® is a cloud-based software that grants IT departments and administrators the ability to communicate with every panel under their management.

- Features include:
- Emergency notification tools
 - Automatic event scheduling
 - App/APK customization
 - Comprehensive usage statistics & monitoring
 - Mobile device and app management software
 - Broadcasting
 - Enhanced security



MESSAGING & NOTIFICATIONS

Easy message and notification sharing to interactive panels can help administrators communicate effectively with students and staff, and keep everyone informed of important announcements, emergencies, and events.

- Administrators could use this feature to:
- Send school-wide announcements about upcoming events or changes to the schedule
 - Share emergency safety information
 - Provide updates for the bus schedule
 - Broadcast the student news



SCHEDULED ROUTINES

To ensure the interactive panel's security and performance, schedule routine maintenance that can be done at any time. Firmware updates will also help the devices stay updated to the latest enhancements.

- Administrators could use this feature to:
- Initiate an update to all panels outside of school hours to make sure panels are ready to go when students and teachers come back to the classroom
 - Schedule the panel to shut down or go to sleep after a specified time of no interaction on the display.



REMOTELY ACCESSIBLE

From any device with web access, administrators can remotely manage devices to check their status and security. This helps to save energy and keep devices in good working condition for longer.

- Administrators could use this feature to:
- Remotely manage and troubleshoot panels
 - Turn off/on panels at a certain time each day to ensure the longevity of panels.
 - Remotely restrict access to panels from unauthorized users

Stands and Mounts

CTI-STAND-ADJM-V4

Adjustable Mobile V4 Stand

A Stand for Every Level

Inclusivity? The perfect solution for all ages & heights.

Compatible: 7000XT & 6000A+ Series Panels

Adjustable: Height (27.6" range for pre-K through adulthood)

Motor: Electrical powered with anti-collision sensor and precision lift

Accessible: ADA compliant



CTI-STAND-CONM-V3

Convertible Mobile Stand

Adjustments Made Easy

Great News! This stand will make your life so much easier.

Compatible: 7065XT Panel

Adjustable: Height (28" range) & angle with tabletop mode

Motor: Electrical powered with anti-collision sensor and precision lift

Accessible: ADA compliant



CTI-STAND-FIXM-V3

Fixed Height Mobile V3 Stand

Simple yet Effective

Has this stand been working out? Consider us impressed.

Compatible: 7000XT & 6000A+ Series Panels

Support: Supports up to 300 lbs

Storage: Removable storage shelf included

Accessible: ADA compliant



CTI-STAND-ADJW-V4

Adjustable Wall V4 Mount

Perfect Size Every Time

Sometimes in education, the simpler, the better.

Compatible: 7000XT & 6000A+ Series Panels

Adjustable: Height (27.6" range for pre-K through adulthood)

Motor: Electrical powered with anti-collision sensor and precision lift

Compact: Easier access & takes up less space at the front of the classroom.



CTI-STAND-MINC

Mini Convertible Mobile Stand

Small but Mighty

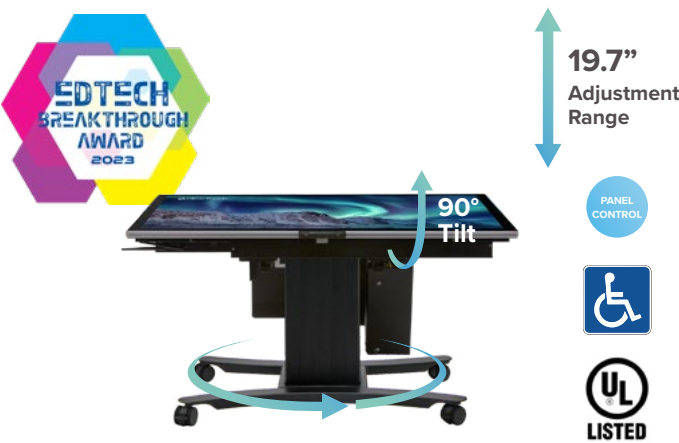
Early learning, meet your new best friend.

Compatible: 7043XT Panel

Adjustable: Height (19.7" range) & angle with tabletop mode

Motor: Electrical powered with anti-collision sensor and precision lift

Accessible: ADA compliant



CTI-STAND-ADJM-M1

Adjustable Mobile M1 Stand

Elevate with Mobility

Learning that moves with you.

Compatible: 7000XT & 6000A+ Series Panels up to 86"

Adjustable: Manually adjustable 27.6" Height range for all ages

Storage: Removable storage shelf included

Accessible: ADA compliant



Accessories



CTS-PC100-UHDC

Panoramic Camera

Everything in One Picture

Capture with intelligence. The Panoramic Camera is engineered to deliver the complete view while delivering innovative features:

- Three 12MP cameras with 4K UHD resolution
- Built-in two microphone array
- Conference platform compatible



CTS-HC100-UHDA

Huddle Camera

Raising the Bar

Who says you have to change out of your pajama pants for a conference call?

- Clear audio with high-fidelity speakers & microphone array
- Compatibility with all Clear Touch panels and software
- Built-in controls with no extra software needed



CTS-RL500-4K20

PTZ Camera

Be Seen with Clarity

Maximize the virtual classroom with high quality video. The PTZ Camera lets you create a digital learning environment.

- Low-light noise reduction algorithm
- Gravity sensor to auto-flip image
- Full body auto-tracking

CTS-WC110-UHHD

Web Camera

Teach and Meet with Ease

HD viewing has never been easier. The Web Camera extends the capabilities of your Clear Touch interactive panels.

- Easy installation with panel mount
- Built-in microphone
- USB 2.0 with power, video, & audio all-in-one



CTS-DC110-WFHD

Document Camera

Teach From a New Angle

Say goodbye to presentation problems! The wireless Document Camera is the perfect addition to any teacher's toolbox with:

- Built-in connectivity and Clear Touch Chorus® software
- Crystal-clear audio and LED lighting
- Multi-directional neck

	PC100	HC100	RL500	WC110	DC110
GENERAL SPECIFICATION					
Description	Best used in admin conference rooms	Best used in medium sized meeting spaces	Best used in a large lecture classroom	Best used in smaller classrooms	Best used for document viewing
Lens	4K UHD	4K	4K	Full HD	10MP
FOV	180°	120° & 5x optical zoom	80° with 340° rotation & 20x optical zoom	84°	
Functions	Multi-view switching	Built-in microphone with noise cancellation	Full speaker auto-tracking	Simple plug & play with USB 2.0	Wireless with flexible multi-directional neck

PASSIONATE EDUCATORS + AN INNOVATIVE ACCESSORY LINE
= INFINITE POSSIBILITIES

Educators have thousands of innovative ideas for bringing their subject to life for students—and they need technology that can keep pace with their creativity. Our accessory line gives teachers and students all the tools they'll ever need, right at their fingertips.



CTS-CM100-245G

Collar Microphone Kit

Your Voice Without Boundaries

The Collar Microphone Kit is a professional audio solution designed to elevate communication and collaboration in educational settings. This kit includes:

- Essential presentation or lecture tool with a user-friendly design
- 2 High-quality mics offering exceptional clarity & amplification
- 1 Neckband mic adapter & 1 hand-held mic adapter for versatility use
- Both microphones can be used by 2 users simultaneously



CTS-KB200-WFBD

Wireless Keyboard

Step Away From the Screen

Take the power into your own hands! Our keyboard & trackpad enables users to present from distances up to 30 feet with:

- Seamless connection with 2.4 GHz connectivity with Windows & Android
- Simultaneously connect via Bluetooth
- USB adapter & rechargeable battery
- Customizable multiple backlit colors



CTI-PCOPS-PC15

PC Module

Two Words: Seamless Connection

Clear Touch's PC offers a newer architecture Intel processor than some competitors, while also providing top-of-the-line specs such as:

- Ultra HD 4K display
- High-speed storage and memory
- Powerful processing



CTS-RM100-USBA

Whole-Room Microphone

Hear Everyone Loud and Clear

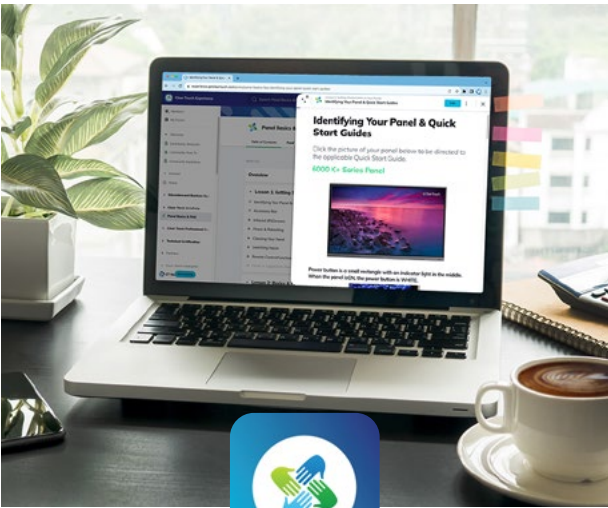
Keep your sound focused. The RM100 ensures clear sound quality, packed with noise reduction and voice tracking technology features:

- Omnidirectional microphone
- Easy installation
- Intelligent noise reduction

Professional Development

The Clear Touch Professional Development Team is uniquely positioned to help our end users develop the skills and knowledge to utilize the Clear Touch Panel and solutions at peak level performance. With our Professional Development Team having extensive K-12 classroom experience, we design courses specific to supporting teachers in their efforts to improve student learning outcomes and engagement.

To learn more about our services, email pd@getcleartouch.com



Introducing the Clear Touch Experience: stay informed, connected, and ahead with the latest solutions. Get expert advice, access Clear Touch Academy for courses and guides, and be part of our community with exclusive offers and giveaways. Join today!

experience.getcleartouch.com

“Always On” Approach:

On-site

Online

On-demand

“The Clear Touch PD experience is different from other experiences that I have been involved in because the *trainers are very knowledgeable*. They’re *former teachers*, so they understand that learning happens at different levels & different abilities. They meet us where we are with our knowledge and are able to grow us to be *more proficient* in using the panels and the software applications.”

PAUL MACH, WACO ISD
CERTIFIED TRAINING WORKSHOP ATTENDEE

[VIEW THE PROFESSIONAL DEVELOPMENT CATALOG](#)

Top Courses

- Virtual Sessions:**
- Duration varies from 90 minutes to 3 hours
- Onsite:**
- 1 full day (6 hours) or 2 half-day sessions
 - Train-the-Trainer courses (2-day or 3-day)
- Clear Touch Academy:**
- In-depth on-demand courses on everything Clear Touch in a convenient app
- Train-the-Trainer:**
- Sustainable Professional Development model designed for classroom settings
 - Effective integration of Clear Touch tools into existing instructional methods
 - Open dialogue on user adoption, teacher engagement, professional advancement, and more!

All courses are offered in English, Spanish, and French!





Save Time, Stress Less

Don't take our word for it, let us show you.

Our Support Team is locally based in Greenville, South Carolina, and can be reached by phone, chat, or support ticket through our website. You won't have to worry about being on hold for hours or talking circles around your problem; this crew is truly here to help.

Guarantees:

- Advanced replacements
- Web chat customer satisfaction
- Professional development opportunities



Technical Support

The Clear Touch® Technical Support Team offers comprehensive assistance to customers who have either purchased or are considering Clear Touch® interactive panels. Their expert Support Team is available to guide customers through installation, troubleshoot technical issues, manage software updates, facilitate warranty claims, and address any other inquiries. Customers have the convenience of reaching out to the Support Team via phone, email, chat, or an online form, with a commitment to providing swift, personable, and efficient solutions. The primary goal of our Support Team is to ensure that customers experience prompt and effective resolution to any concerns or questions they may encounter.

“ We don't have a lot of support calls that we have to make, which is good; but when we do have to contact Clear Touch, *they're very prompt and responsive to our needs*. If something's going on, whether it be a power issue, or an app, they're really quick to respond, and give us some troubleshooting steps to try. ”

JOSHUA ADAMS

MECKLENBURG COUNTY PUBLIC SCHOOLS



Warranty Procedures

Clear Touch will repair any defect in materials or workmanship in a defective product during your warranty period. In the event of a product failure, we will ship out a replacement ahead of time and recover the original product afterward (covering all shipping costs). Warranty periods will vary based on the specific product. Extended warranties are available for specific products.

To learn more about our support options, visit getcleartouch.com/support.



Interact With Panels

Clear Touch®, founded in 2012, is a leading US global manufacturer of interactive touch panels, accessories, as well as software solutions for education, business, and government.



Elevate With Signage

Clear Digital® cuts through the chaos and clutter with innovative digital signage solutions that deliver the ideal blend of technological capabilities, simplicity, and versatility.

OUR STORY



Collaborate With Software

NUITEQ® is an award-winning, collaborative software company that enables teams, educational institutions, and businesses to add value through smarter human interaction.

Gel Sanitizing Station



Clean and clear communication
across all of your content.

Protect yourself and others from germs with the Gel Sanitizing Station. This innovative device dispenses hand sanitizer without any contact, so you can avoid touching contaminated surfaces. Place the Gel in busy locations, such as doorways and bathrooms, and use its high-definition screen to share vital information, such as announcements, schedules, hygiene tips, and more. The Gel helps your organization stay informed and safe.



- Vibrant Visibility:** 21.5" LED screen, 1080p HD resolution
- Sanitary Convenience:** Touch-free dispenser & large reservoir
- Consistent Delivery:** Dispenses up to 2.6 ml of sanitizer
- Versatile Display:** Mount to a wall or utilize a stand
- Remote Content Management:** Use the Clear Digital® Sho® CMS software or one that supports APK (Android) software

HOTEL LOBBIES • GROCERY STORES • MEETING ROOMS •
HOSPITALS • SCHOOLS • OFFICE HUDDLE SPACES

equation. With delta being the system input and psi being the output.

$$G(s) = \frac{\Psi(s)}{\Delta(s)} = \frac{V_x}{sL}$$

Figure 3: Vehicle dynamics showing heading angle

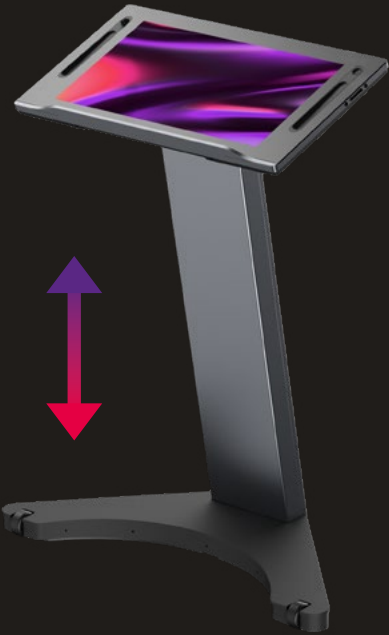
SECTION 5 3 MECHANICAL ENGINEERING



Tok™ Digital Podium

Step up and stand out –
the stage is yours to conquer.

Presenting the Tok™, the height-adjustable podium that transforms your presentations with digital precision and practical versatility. The Tok™ has a wheeled base and an integrated battery, which means you won't need to side-step wires during your presentation. The sturdy base has built-in connections for more permanent power.



- Made for All:** 3ft - 4ft height adjustment
- Stunning Display:** 250 nit high screen brightness
- Wireless Casting:** Content casting with screen annotations
- Touch Screen:** Built-in PC & integrated software
- Easy Access:** Whisper-quiet motorized controls

INCLUDES CLEAR TOUCH®
SOFTWARES PRE-LOADED,
CHORUS® AND COLLAGE®.

BOARD ROOMS • ENTERTAINMENT THEATERS • CONFERENCE STAGES •
COLLEGE LECTURE HALLS • MEETING ROOMS • HOUSE OF WORSHIP

Müv Mobile Kiosk

Where mobility meets impact.

The Müv is a versatile mobile kiosk with a 10-point multi-touch display, offering an interactive experience for users. Its sleek design, adjustable height, and long-lasting battery make it perfect for educational environments, interactive signage, or wayfinding applications in any environment. The Müv features a user-friendly height adjustment mechanism and a tilting screen, ensuring a perfect fit for any user.

Captivating Visuals: 27" UHD touchscreen display

Operating System: Android 13 OS with EDLA certification

Effortless Mobility: Low-profile mobile base

Unleash Engagement: 10 points of interactive touch

Brilliant Versatility: Supports both portrait and landscape



Müv for Education

The Müv transforms education, streamlining visitor sign-in, offering interactive learning kiosks, and replacing static signs with dynamic, engaging content for students and staff.

Müv for Business

Transform your reception area with a sleek visitor sign-in kiosk. Engage customers with interactive product information displays. Keep teams informed and captivate audiences at trade shows or events with Müv's dynamic digital signage.

HOTEL LOBBIES • CLASSROOMS • LECTURE HALLS
• COLLEGE CAMPUSES • LOBBY WAITING ROOMS
• HEALTHCARE WAITING AREAS

Evo™ Roll & Evo™ Roll Pro Mobile Digital Signage

Destination: unknown, but
we're rolling out with style.

Posterboards and markers are a thing of the past. Clear Digital® has created two stunning, mobile displays that communicate your message with clarity. This mobile digital signage solution has it all - from the water and impact resistance of its steel frame to its 10-hour battery life and easy setup, storage, and transport. These displays are also powered by an Android operating system, providing a user-friendly interface and access to a wide range of apps. With Clear Digital's mobile displays, your message will be conveyed with modern style and ease. Experience the perfect indoor and outdoor mobile digital signage solution. Pair with Clear Digital Sho® to create and manage your Evo signage from on the go.



- Vivid Brilliance:** 43" screen HD quality display
- Dynamic Sound:** Built-in Speakers 2 x 5W
- Rugged Durability:** Water & impact resistant
- Pure Simplicity:** USB content upload
- Long-Lasting Battery:** 10 hours run time

[SPEC SHEET DOWNLOAD](#)



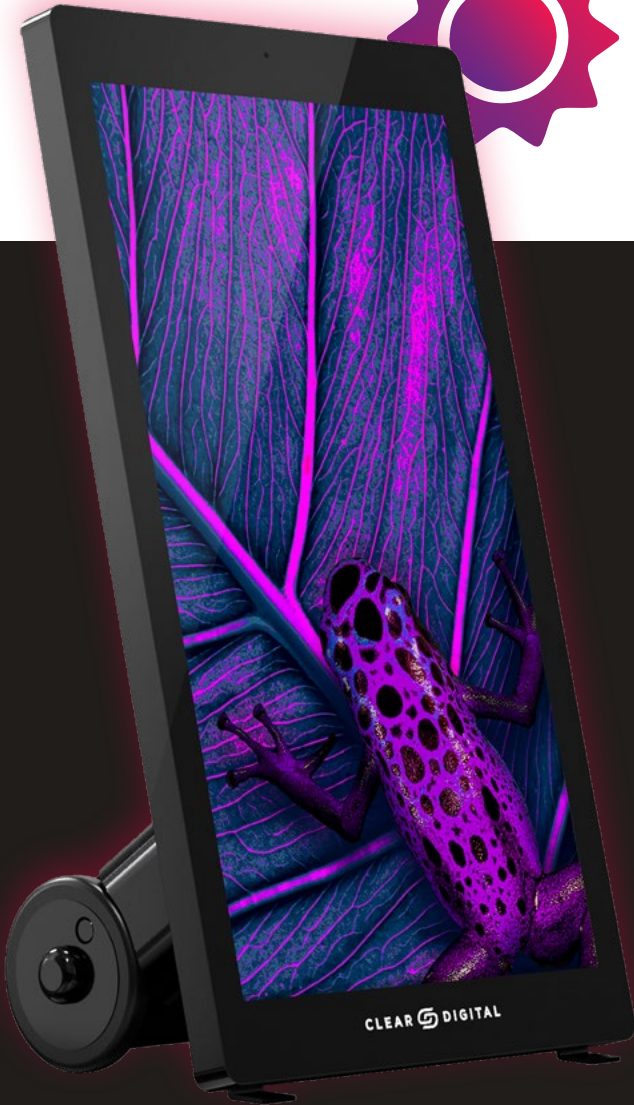
EVO ROLL PRO



CAFES • HOTELS • MUSEUMS • THEME
PARKS • COLLEGE CAMPUSES • PARKS •
FOOD TRUCKS • PARKING LOTS • DROP-OFF
LOCATIONS • SCHOOLS

CE FC RoHS

EVO ROLL



KEY DIFFERENCES

EVO ROLL

- USAGE** INDOOR
- BRIGHTNESS** 1000 NIT
- GLARE** LOW GLARE
- ELEMENT RESISTANCE** IP54 PROTECTS AGAINST DUST AND WATER SPLASHING

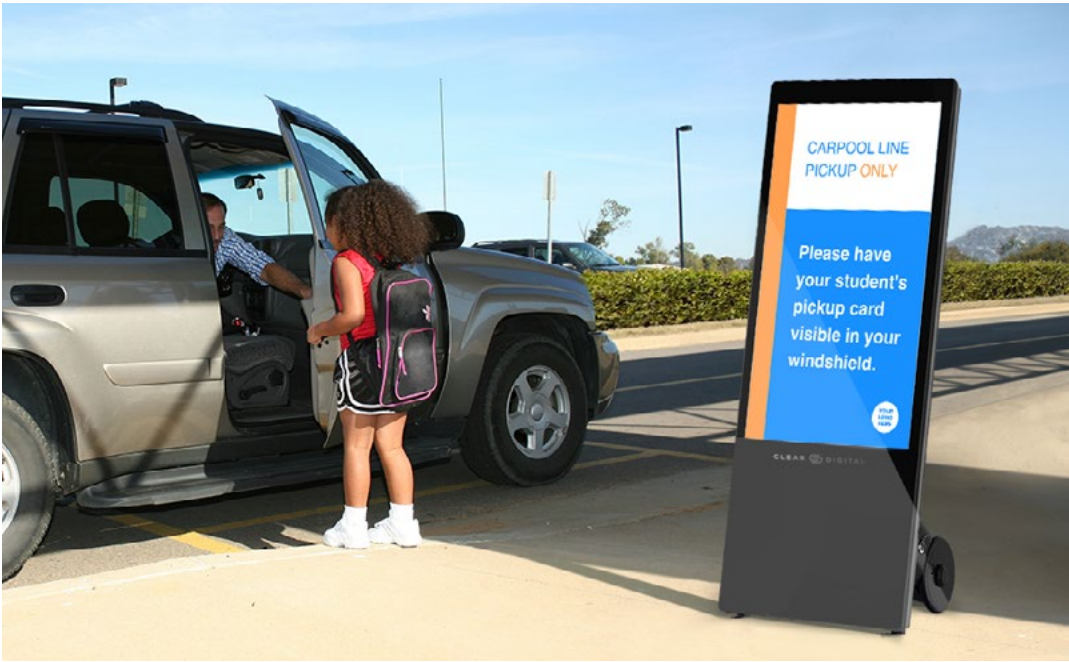
EVO ROLL PRO

- USAGE** IN/OUTDOOR
- BRIGHTNESS** 2000 NIT
- GLARE** ANTI GLARE
- ELEMENT RESISTANCE** IP65 PROTECTS AGAINST DUST AND POWERFUL WATER JETS FROM ANY DIRECTION

Evo™ Tall & Evo™ Tall Pro Mobile Digital Signage

Reaching new heights,
in digital signage.

Building on the Evo’s legacy of stunning visuals, these digital signage displays boast a lifted screen base for a more prominent viewing experience. The Evo Tall Series introduces a revolutionary concept in mobile displays - a sleek 55” form factor with a 43” LED screen, perfect for capturing attention at eye-level and delivering impactful presentations. Choose from the Evo Tall for stunning indoor visuals or the Evo Tall Pro for all-weather brilliance.



- Dazzling Visuals:** 43” screen TFT LED (1000-2000 nit brightness)
- Anti-Glare:** AG Low glare glass
- Long-Lasting Battery:** 10-12 hours run time
- Effortless Mobility:** Move your digital signage with ease
- Remote Management:** Manage your content remotely through our Sho Software



CAFES • HOTELS • MUSEUMS • THEME
PARKS • COLLEGE CAMPUSES • PARKS •
FOOD TRUCKS • PARKING LOTS • DROP-OFF
LOCATIONS • SCHOOLS

CE FC RoHS



EVO TALL

KEY DIFFERENCES

EVO TALL		EVO TALL PRO	
USAGE	INDOOR 	USAGE	IN/OUTDOOR 
BRIGHTNESS	1000 NIT	BRIGHTNESS	2000 NIT
GLARE	LOW GLARE	GLARE	ANTI GLARE
ELEMENT RESISTANCE	IP54 PROTECTS AGAINST DUST AND WATER SPLASHING	ELEMENT RESISTANCE	IP65 PROTECTS AGAINST DUST AND POWERFUL WATER JETS FROM ANY DIRECTION



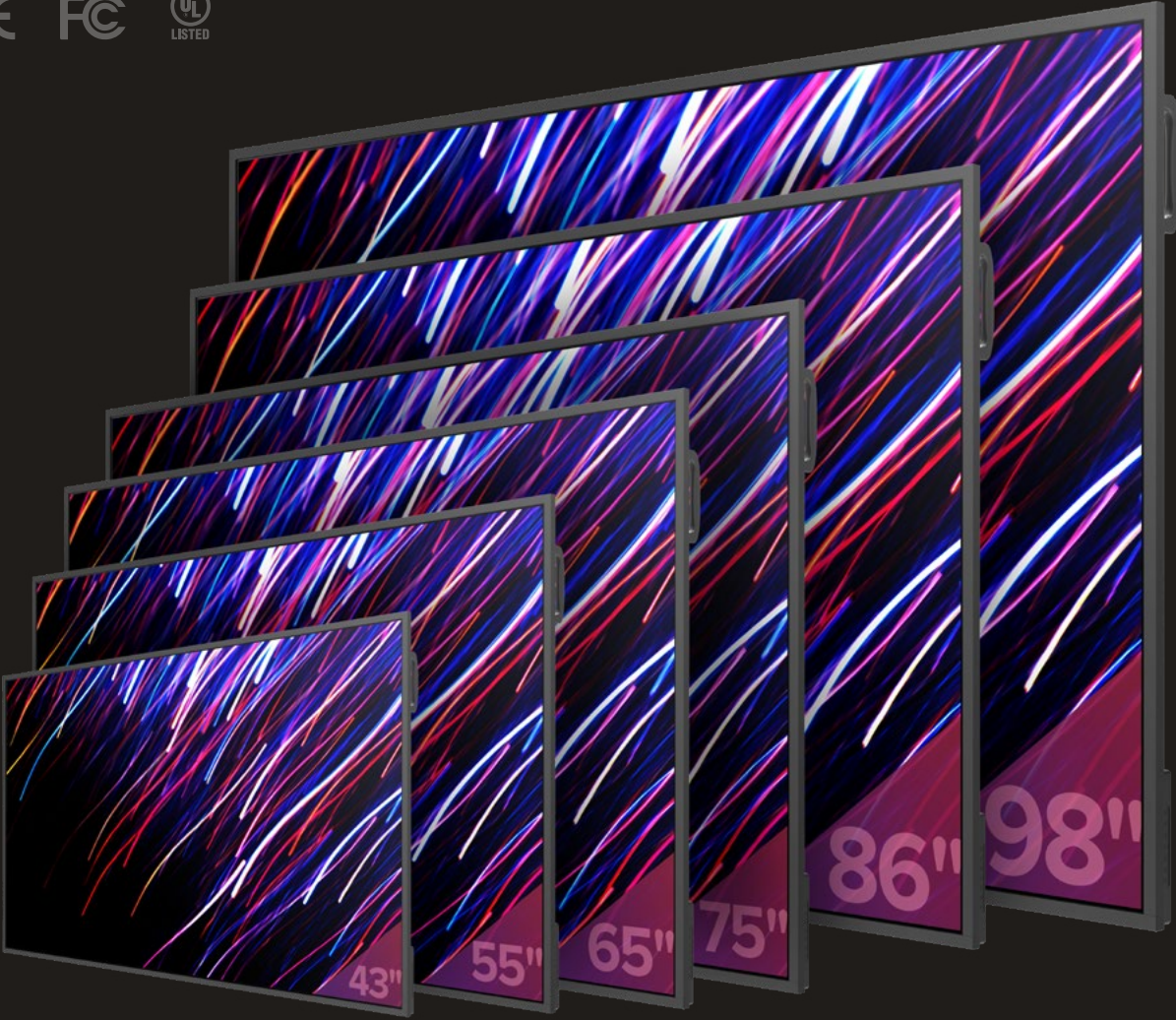
43", 55", 65", 75", 86" & 98"

Part Numbers: CDS-NIO43-NDS-S15; CDS-NIO55-NDS-S15; CDS-NIO65-NDS-S15; CDS-NIO75-NDS-S15; CDS-NIO86-NDS-S15; CDS-NIO98-NDS-S15

Nio™ Non-Interactive Display

Anyway you want it,
that's the way you Nio.

Experience exceptional 4K resolution with the Nio™ Non-Interactive Display, which has exclusive features and software options for brilliant details, colors, and brightness. The Nio™ can be mounted in portrait or landscape mode for maximum visibility. Collaborate with up to nine devices using Clear Touch's screen-sharing software, Collage®. With Clear Touch Command® device management and emergency notifications are also effortless - even from a distance. Clear Digital's Sho Content Management System is designed to work seamlessly with our digital signage displays. Bundle with Sho for the ultimate digital signage experience.



Air Mouse

- QWERTY KEYBOARD
- 32 FT DISTANCE
- LED STATUS

*INCLUDED



Multiple Options: 6 sizes available: 43", 55", 65", 75", 86" & 98"

Perspective Change: Supports landscape & portrait modes

Pure Simplicity: Integrated Android 11

Beautifully Crafted: Even, minimal bezel

Glare: Anti-glare panel

Integrated Software: Clear Touch® Command®, Clear Touch® Collage®, Clear Digital's Media Manager & Clear Digital® Sho® available

MOVIE THEATRES • DIGITAL SIGNAGE • CLASSROOMS •
COLLEGE CAMPUSES • HOTEL LOBBIES • HALLWAYS

138", 165", & 220"
Part Numbers: CDS-VUEVW-138P-P15-V2; CDS-VUEVW-165P-P19-V2; CDS-VUEVW-220P-P25-V2

Vue® II Video Wall

Larger-than-life presentations
are impossible to ignore.

Clear Digital® presents Vue® II Video Wall, a striking LED display that delivers an ideal blend of simplicity, versatility, and technological capabilities. Featuring our LED-protective PixelGuard™, ideal for high traffic areas with increased contrast for a more seamless and defined image. PixelGuard™ is a protective coating that shields the LEDs from impacts, water, and dust. It also boosts the brightness and minimizes the glare of the display.

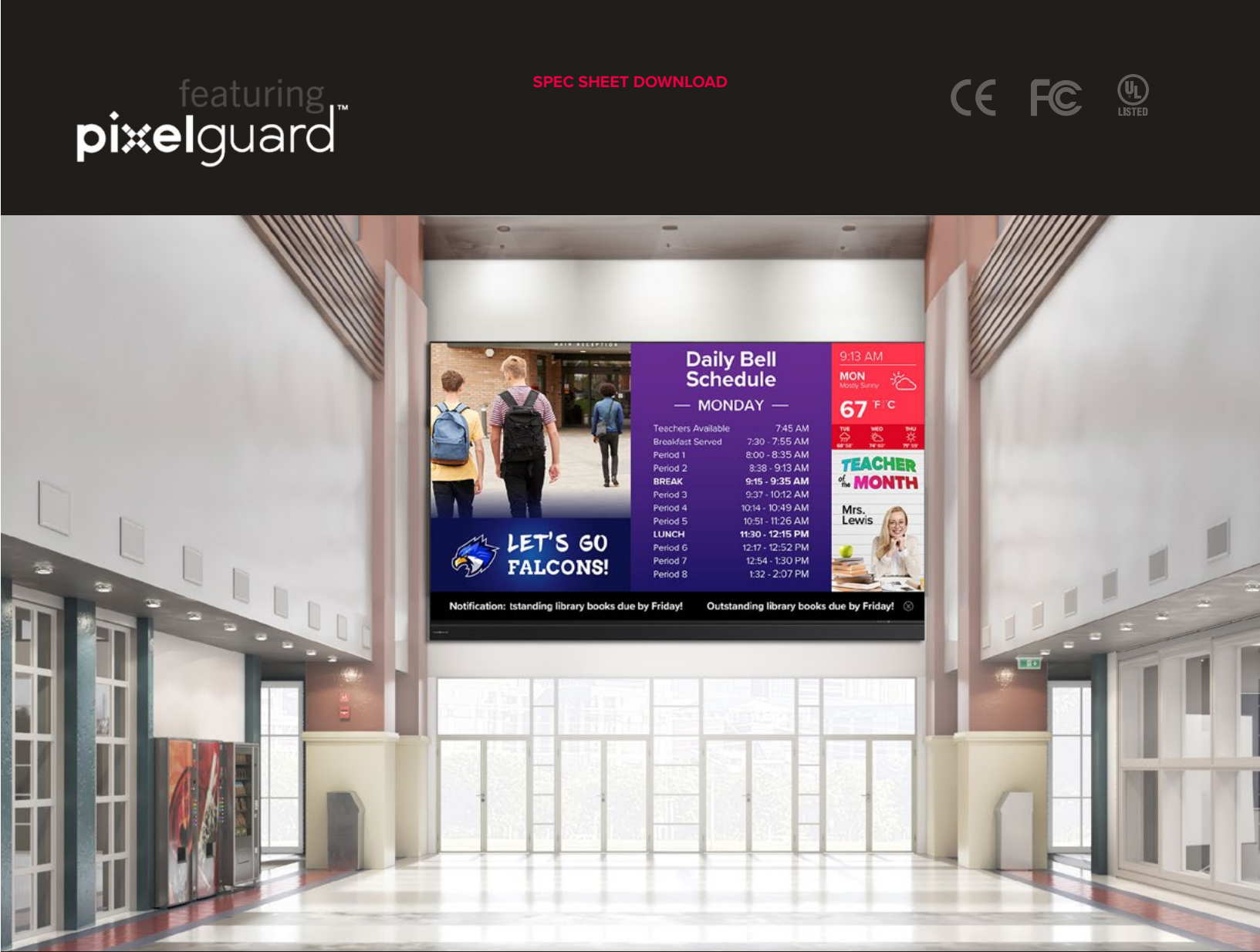
Our display is front serviceable thanks to easily removable tiles that click into place. Take individual sections of the Vue® II out to repair or replace as needed. Each tile has auto-calibration and automatically matches colors with the tiles next to it once reinstalled, leaving no visible seams between tiles.

COLLEGE CAMPUSES • SCHOOLS •
HOUSE OF WORSHIP • AUDITORIUMS •
LOBBIES • GYMNASIUMS • THEATERS



ADA compliant
mobile stand available
for sizes up to 165".

- Vivid Brilliance:** HD quality display
- Massive Screenspace:** Three sizes up to 220"
- Fast Turnaround:** Average 45 day delivery
- Slim Design:** 38.5 mm thickness on all sides
- Easy Access:** Modular setup & front access



More than a big screen — A smarter way to display.

The Android operating system is a crucial component of the Vue® II. This advanced video wall system relies on the Android operating system to provide seamless integration with various types of digital content, resulting in clear and brilliant visuals that customers can enjoy. The Vue® II offers a versatile and user-friendly solution for businesses and organizations looking to amplify their message and attract more customers. With pristine software such as Collage® and Sho®, the Vue® II guarantees seamless integration of multiple visual sources, resulting in smooth transitions and an immersive viewing experience. In addition, the front speakers of the Vue® II Video Wall produce clear and powerful audio output, further enhancing the overall experience for viewers.

Learn more about Clear Touch software in the Clear Touch section of this booklet!

featuring
pixelguard™

SPEC SHEET DOWNLOAD



Sho® Content Management System Software

Say whatever you want,
from wherever you are.

Introducing Sho®, the cloud-based digital signage software that makes it easy to create stunning digital signage displays that connect with your audience. With its intuitive interface, customizable templates, and remote connection, Sho® makes it easy to create engaging content and manage your digital signage from wherever you are.

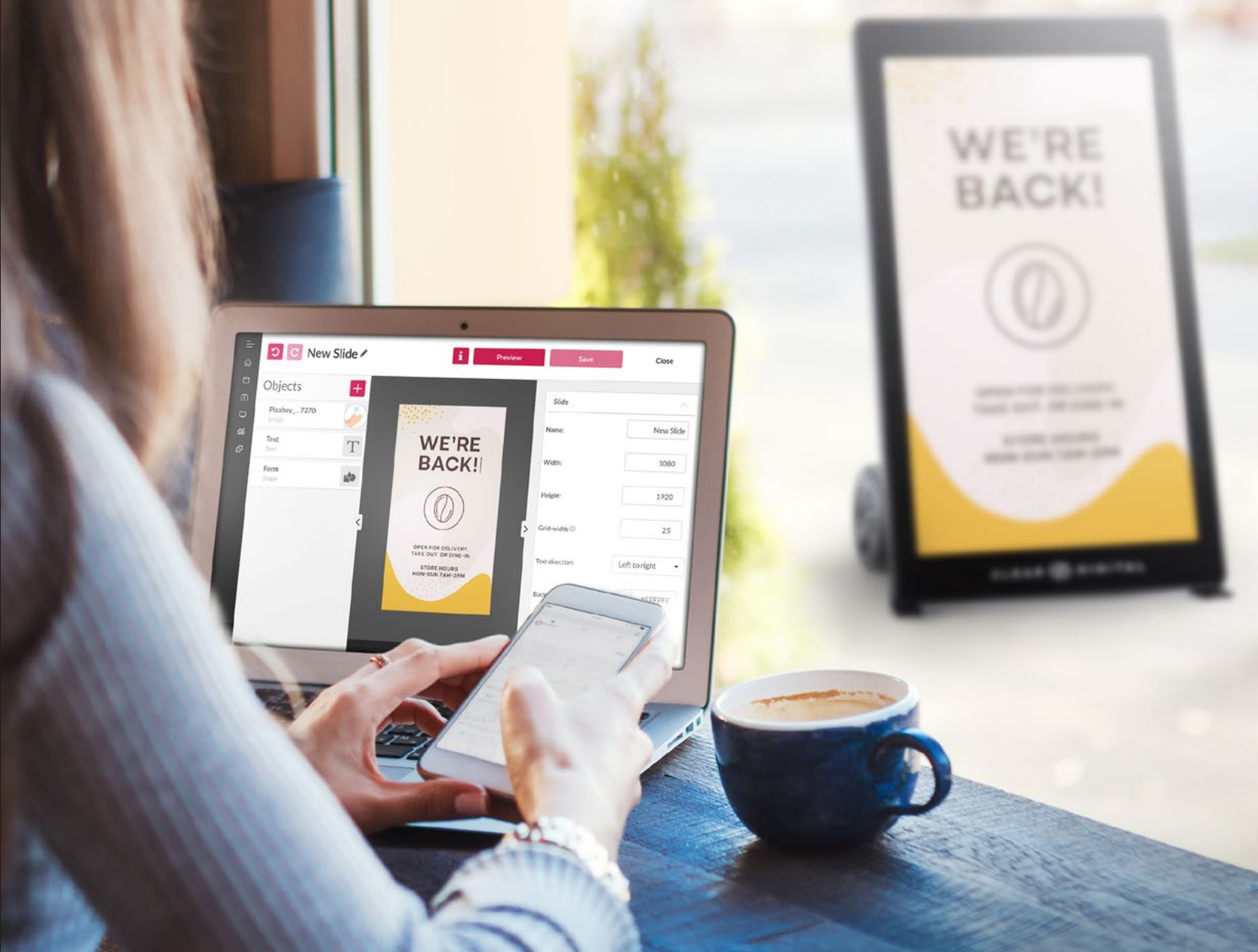
Timeless: Customize and schedule your own content

Customizable: Free basic templates already made and ready to use

Integration: Pixabay integration with 2.7 million pics and videos

Accessible: Supports multiple formats; JPEG, PNG, video, documents

Compatible: Compatible with the Sho® Stick and Clear Digital® products



Create, Connect & Impress with the Sho® Stick

[SPEC SHEET DOWNLOAD](#)

Part Number: CDS-SHODS-SSPS

Sho® Stick

Simple Design: Easy to connect to any compatible device

High Performance: Built with Android 10

Pure Simplicity: USB content upload

Connectivity: 2.4 Ghz and 5 Ghz WiFi capabilities

High Resolution: 4K & 2K HDR video





About Clear Digital

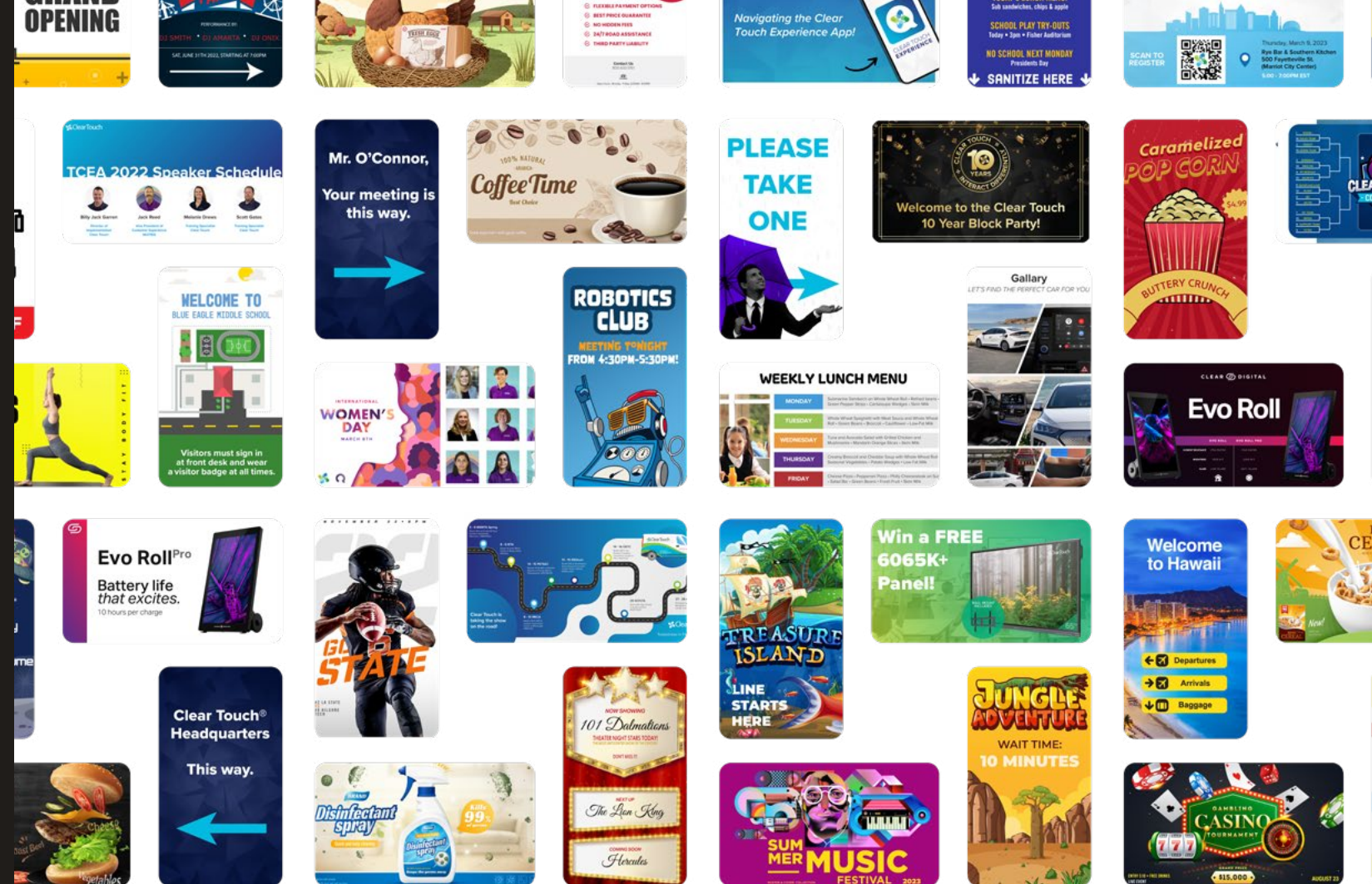
Our mission is to create the best digital display signage solutions for educational and business purposes.

Clear Digital® is an affiliate company of Clear Touch®, created to help you communicate to your audience with stunning clarity. We design digital display solutions to help our users cut through the chaos and deliver messages with style.

With decades of combined experience in transforming educational and business environments with disruptive technology, we're obsessed with listening to today's problems and innovating to create the best solutions for them. And we're not afraid to put our products to the test.

Clear Digital® positions unique, stunning displays at the forefront to bring messages to life with vibrancy and precision. Whether you're indoors or outside – Clear Digital® has the solution to meet your performance needs and exceed your expectations. We aren't in the business of copying digital signage displays, we set the bar where extraordinary begins.

Contact a Clear Touch Sales Representative for pricing or a demo:
864.973.7973 | getcleardigital.com/demo



Boundless Potential. Unlimited Applications.

Unswervingly dependable – our digital display solutions are up to any challenge. The possible applications for our digital displays are truly **limitless**. The technology of tomorrow is in your hands today.

CLEAR  DIGITAL

BUYER'S GUIDE

getcleardigital.com

Evolved

Digital signage